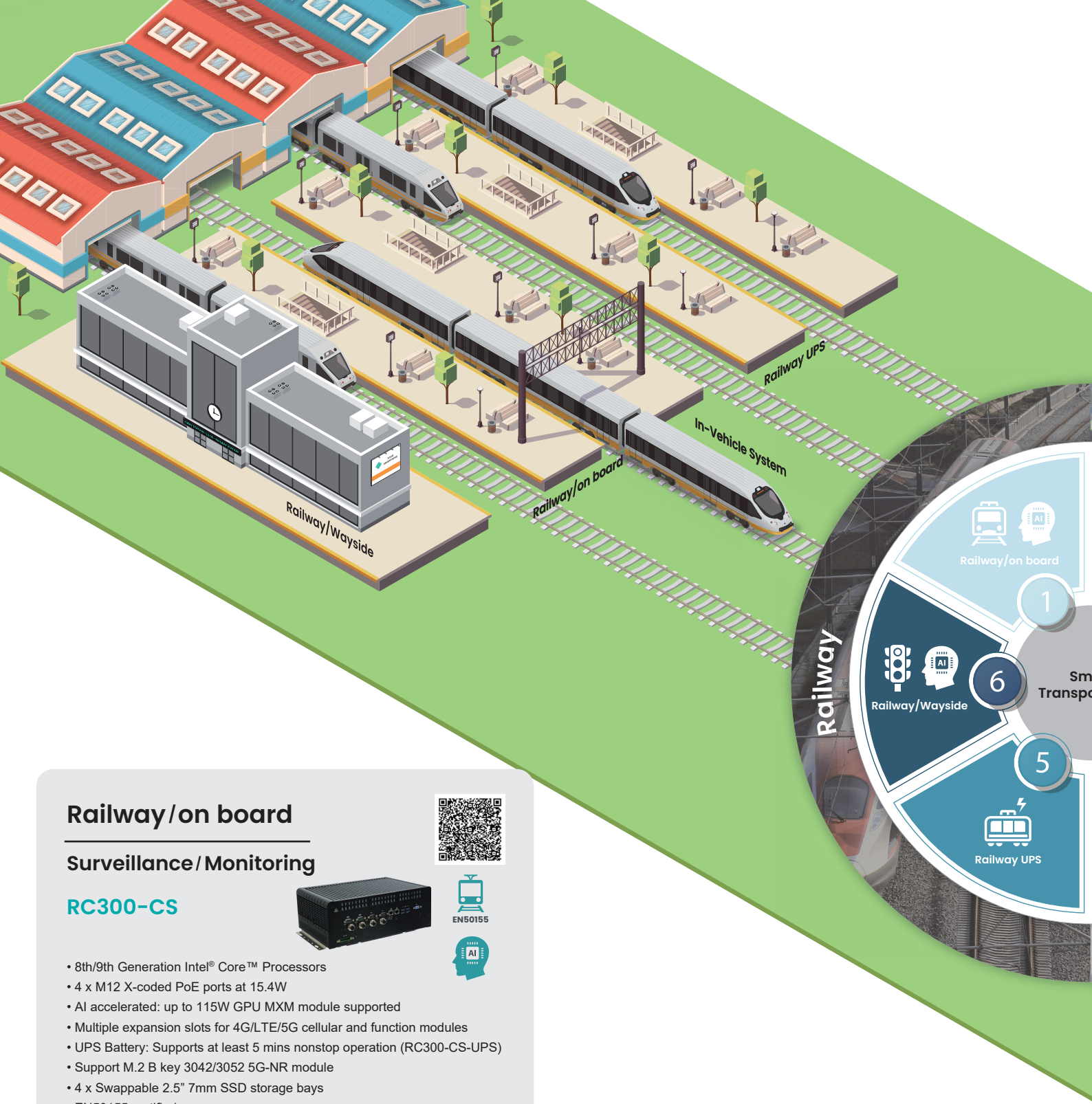




Revolutionizing Transportation

Exploring Cutting-Edge Technologies and
Innovations Shaping the Way We Move



Railway /on board

Surveillance/Monitoring

RC300-CS



- 8th/9th Generation Intel® Core™ Processors
- 4 x M12 X-coded PoE ports at 15.4W
- AI accelerated: up to 115W GPU MXM module supported
- Multiple expansion slots for 4G/LTE/5G cellular and function modules
- UPS Battery: Supports at least 5 mins nonstop operation (RC300-CS-UPS)
- Support M.2 B key 3042/3052 5G-NR module
- 4 x Swappable 2.5" 7mm SSD storage bays
- EN50155 certified

Railway /on board

Surveillance/Monitoring

RC500L-CMS

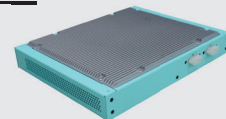


- High Performance Railway System
- Supports 10th Gen Intel® Xeon/Core™/Pentium/Celeron Processor
- 4 x M12 X-coded PoE or 2 x 10G SFP+ Ports
- 1 miniPCIe and 4 M.2 slots for CAN bus/MVB/LTE/5G/WiFi/Storage modules
- 2KV Isolated 16bits DIO ports
- Supports M.2 B key 3042/3052 5G-NR module with dual SIM
- 9~36Vdc power input
- EN50155 compliance

Railway UPS

UPS

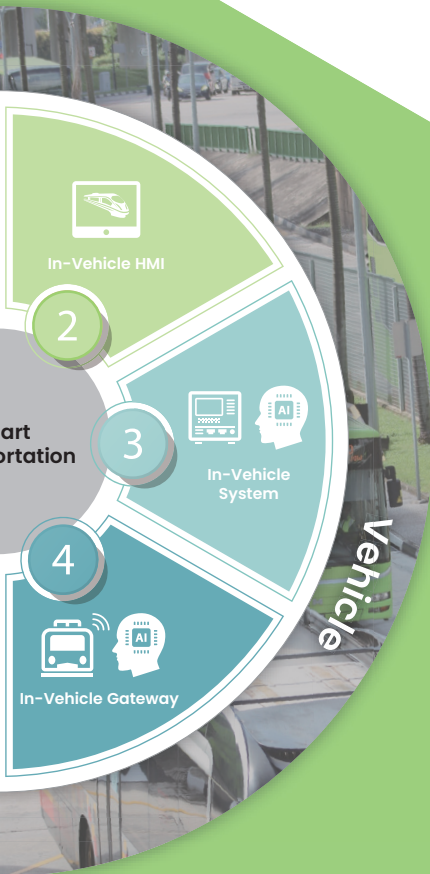
UPS-IP300



- EN50155 compliant battery based Uninterruptible Power Backup system
- 110Vdc (77VDC~137.5VDC) power input and 9~12.6Vdc power output
- 3S2P 3900mAh Lion battery integrated, max. 300W continuous output
- Backup time >10min at 300W
- 80 watt-hour (7.4Ah*10.8V) capacity
- Discharge operation temperature: -20°C ~60°C
- Storage 3 months at 45°C storage temperature (Recovery 90% after storage)
- 9-pin input power connector, 2x 8-pin output power connectors

On-Board and Wayside Solutions for Advanced Railway Surveillance and Monitoring

In the railway industry, ensuring the safety and efficiency of operation is paramount. Our extensive product portfolio—including on-board surveillance and monitoring systems, wayside control solutions, gateways, and UPS units—is thoughtfully designed to meet a wide array of application needs, providing dependable and adaptable solutions for any railway setting.



Railway/Wayside Surveillance/Monitoring

ECX700-ADP

- Intel® Alder Lake-P Processor i5-1245UE/i7-1265UE
- Intel® Iris® Xe Graphic Performance
- Extreme Ruggedized design to IEC 60068-2-64 & -20 ~ 70°C wide temperature
- Rich I/O help integrators meet the demand for various applications
- Waterproof & Dustproof design conforming to IP67



Railway/Wayside

Control

EC622-RPS

- 12th/13th/14th Generation Intel® Core™ with Intel® H610E/R680E
- Supports DDR5 SODIMM up to 64GB
- Rich I/O connectivity: 2 2.5GbE, 6 GbE(or 4 GbE, 2 PoE), 10 COM, 5 USB 3.2(Gen2x1), 1 USB Type-C, 1 VGA, 1 HDMI, 1 DP++
- Multiple Expansion: 5 M.2 slots, 2 PCIe slot
- Support 5G Communication
- Operating Temperature: -20 to 70°C



Railway/Wayside

Control

EC643-RPS

- 12th/13th/14th Generation Intel® Core™ with Intel® H610E/R680E
- Supports DDR5 SODIMM up to 64GB
- Rich I/O connectivity: 2 2.5GbE, 6 GbE(or 4 GbE, 2 PoE), 10 COM, 5 USB 3.2(Gen2x1), 1 USB Type-C, 1 VGA, 1 HDMI, 1 DP++
- Multiple Expansion: 5 M.2 slots, 3 PCIe slot
- Support 5G Communication
- Operating Temperature: -20 to 70°C



Railway/Wayside

Gateway

ECX700-AL

- Intel® Atom® Processor E3900 Series Apollo Lake Quad Core CPU
- Intel® Gen9 Graphic Performance
- Extreme Ruggedized design to IEC 60068-2-64 & -40 ~ 70°C wide temperature
- Rich I/O help integrators meet the demand for various applications
- To fulfill wireless transmission, an external SIM slot reduces the difficulties to change SIMs, and the high gain antenna ensures the quality of the signal
- Various applications: Industrial automation, Outdoor application
- Waterproof & Dustproof design conforming to IP67/ IP69K





Enhancing Performance with Innovative In-Vehicle Solutions

DFI's in-vehicle solutions integrate cutting-edge technology with strategic partnerships to guarantee outstanding performance and adaptability in any setting. Our diverse product portfolio—comprising the EDGE AI Series, Driver HMI, Gateways, and UPS—is expertly crafted to address a wide array of application needs. These solutions provide the flexibility and reliability essential for success in today's demanding environments.

In-Vehicle HMI

HMI

VP101-M8M



E24

- 10.1" driver HMI
- NXP i.MX 8M Dual/Quad Cortex
- IP65 Front Panel Protection
- High Brightness: 10.1" 1200 cd/m²
- Rich I/O: 1 GbE, 4 COM, 1 CAN Bus, 2 USB 3.1 Gen1
- Smart Power Ignition Control: Power delay and protection time setting
- E-Mark certified

In-Vehicle HMI

HMI

VP070-M8M



E24

- 7" driver HMI
- NXP i.MX 8M Dual/Quad Cortex
- IP65 Front Panel Protection
- Rich I/O: 1 GbE, 2 COM, 1 CAN Bus, 2 USB 3.1 Gen1
- Smart Power Ignition Control: Power delay and protection time setting
- E-Mark certified

In-Vehicle System

Surveillance

VC500-CMS



E24

- High Performance Fan-less In-Vehicle System
- Supports 10th Gen Intel® Xeon/Core™/Pentium/Celeron Processors
- 4 x PoE or 2 x 10G SFP+ Ports
- 1 miniPCIe and 4 M.2 slots for CAN bus/LTE/5G/WiFi/Storage modules
- 2KV Isolated 16bits DIO ports
- Supports M.2 B key 3042/3052 5G-NR module with dual SIM
- OOB management support upon request
- E-Mark certified

In-Vehicle System

Surveillance

VC500-CMS-MXM



E24



- High Performance Fan-less Edge AI In-Vehicle System
- Supports 10th Gen Intel® Xeon/Core™/Pentium/Celeron Processors
- 4x M12/RJ45 802.11af PoE or 2x 10G SFP+ Ports
- Supports MXM GPU module with Four Display Ports
- 1 miniPCIe and 4 M.2 slots for CAN bus/LTE/5G/WiFi/Storage modules
- Supports M.2 B key 3042/3052 5G-NR module with dual SIM
- OOB management support upon request
- E-Mark certified

In-Vehicle System

Gateway

VC230-AL



E13

- Anti-vibration and fanless in-vehicle computer
- Supports ignition delay on/off function
- 1 mSATA, eMMC storage options
- Support GNSS by default
- Dual SIM support for cellular
- Supports Wi-Fi, LTE, and CAN bus communication
- E-Mark certified

In-Vehicle System

Gateway

VC700-ASL



IT PT

- Intel® Amston Lake Processor
- Build-in OOB remote management
- 2 x Mini-PCIe and 3 M.2 sockets for CAN bus/GPS/LTE/5G/WiFi/Storage modules
- Build-in 6 axis sensor for driver detection within fleet management
- Build-in Audio Amp to driver 10W speaker
- 2KV Isolated 8bits DIO ports
- Wide voltage: 9~36V vehicle power input with ACC/IGN function
- Rugged -40°C to 70°C operation without active fan
- E-Mark and ITxPT compliance

In-Vehicle System

Surveillance/Monitoring

VC300-CS



E24



- 8th/9th Generation Intel® Core™ Processors
- 4 x 802.3af PoE ports
- AI accelerated: up to 150W GPU MXM module supported
- Multiple expansion slots for 5G cellular supported
- Extended operating temperature: -20°C to 70°C
- E-Mark certified

In-Vehicle System

T-box

VC900-M8M



E24

- ARM-Based in-vehicle system: Support Yocto Linux 2.5 and Android 9.0
- NXP i.MX8M Dual/Quad Cortex
- 6 axis IMU (3 Accelerometer + 3 Gyroscope)
- Rich I/O: 1 GbE, 4 COM, 1 CAN Bus, 2 USB 3.1 Gen1, 1 Micro USB (OTG)
- Wide voltage: 9~36V vehicle power input with ACC/IGN function
- Wide temperature: -20°C~70°C operation without active fan
- E-Mark certified

Worldwide offices

Headquarters DFI Inc.

10F, No.97, Sec.1, Xintai 5th Rd.
Xizhi Dist., New Taipei City 221416
Taiwan (R.O.C.)
Tel: +886 (2) 2697-2986
Fax: +886 (2) 2697-2168
www.dfi.com

DFI AMERICA, LLC.

197 Route 18 South, STE 108, East
Brunswick, NJ 08816, U.S.A.
Tel: +1 (732) 390-2815
Fax: +1 (732) 562-0693
us.dfi.com

DFI Co., Ltd.

5F Dai2 Denpa Bldg. 2-14-10 Sotokanda
Chiyoda-ku, Tokyo, 101-0021, Japan
Tel: +81 (3) 5209-1081
Fax: +81 (3) 5209-1082
www.dfi.com

Diamond Flower Information (NL) B.V.

Klompemakerstraat 89, 3194 DD
Rotterdam Hoogvliet, The Netherlands
Tel: +31 (10) 313-4100
Fax: +31 (10) 313-4101
www.dfi.com

Yan Ying Hao Trading Co., Ltd. (Shenzhen)

1819, 18F, Hongyu Building, Longguan
Road, Shitouling, Yucui Community,
Longhua Street, Longhua District,
Shenzhen, China
Tel: +86 (0755) 2372-9390/2372-9391
www.dfi.com



DFI Desire
For
Innovation

Founded in 1981, DFI is a global leading provider of high-performance computing technology across multiple embedded industries. With its innovative design and premium quality management system, DFI's industrial-grade solutions enable customers to optimize their equipment and ensure high reliability, long-term life cycle, and 24/7 durability in a breadth of markets including Industrial Automation, Medical, Gaming, Transportation, Energy, Mission-Critical, and Intelligent Retail.